

TORO®

## NDS PRO-SPEC® SERIES CORRUGATED VALVE BOXES

# SUPERIOR STRENGTH WITH UNIQUE CORRUGATED WALLS

### FEATURES

NDS Pro-Spec Series water valve boxes have thicker walls, reinforced covers and ribs, and NDS Pro-Spec Series are engineered for heavy-duty use.

NDS® Standard Series round valve boxes are lighter than the NDS Pro-Spec Series, yet designed for longevity.

Available in a wide variety of sizes, colors and designations, all NDS boxes and lids contain UV inhibitors for sustained durability and performance in direct sunlight.

#### ■ Reinforced Covers and Sidewalls

Sturdy covers for heavier loads; reinforced ribs offer exceptional sidewall strength

#### ■ Specification-Grade Valve Boxes

Thicker wall dimensions provide increased strength and durability for commercial applications

#### ■ Integrated Nut

Stainless steel nut on boxes for bolt-down capability

#### ■ High UV Resistance

Prevents discoloration and cracking for sustained durability and performance

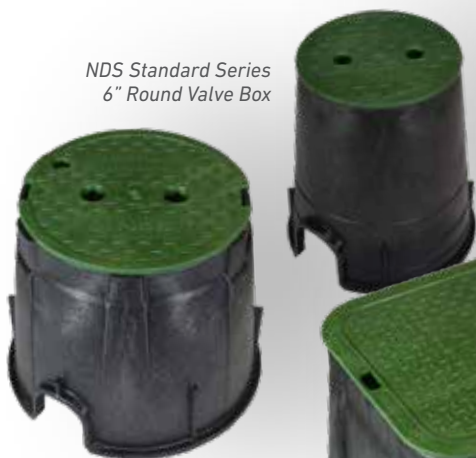
#### ■ Overlapping Covers for Additional Protection

Overlapping covers prevent dirt and grass from settling between body and cover

#### ■ ICV (Irrigation Control Valve) Designation

Covers are identified with ICV designation, unless otherwise specified

*NDS Standard Series  
6" Round Valve Box*



*NDS Pro-Spec Series  
10" Round Valve Box*



*NDS Pro-Spec Series  
14"x17" Corrugated Valve Box*



*NDS Pro-Spec Series  
15"x 21" Corrugated Valve Box*

## NDS® VALVE BOXES (NVB) SPECIFICATIONS

## DIMENSIONS

NDS® Standard Series  
6" Round Valve Box

- Material: HDPE
- Box Color: Black
- Lid Color: Green
- Lid Marking: ICV (Irrigation Control Valve)
- Box Weight: 0.45 kg (1.04 lb)
- Lid Weight: 0.10 kg (0.23 lb)
- Total Weight: 0.58 kg (1.27 lb)
- Load rating: Pedestrian and lawn care equipment
- Made in USA

## WARRANTY

- Two years

NDS Pro-Spec® Series  
10" Round Valve Box

- Material: HDPE
- Box Color: Black
- Lid Color: Green
- Lid Marking: Irrigation Control Valve
- Box Weight: 1.36 kg (2.99 lb)
- Lid Weight: 0.55 kg (1.21 lb)
- Total Weight: 1.91 kg (4.20 lb)
- Load rating: Pedestrian and lawn care equipment
- Includes 3/8"-16 brass nut and 2 1/2" x 3/8" stainless steel bolt
- Made in USA

## WARRANTY

- Two years

NDS Pro-Spec® Series  
12" x 17" Corrugated Valve Box

- Material: HDPE
- Box Color: Black
- Lid Color: Green
- Lid Marking: Irrigation Control Valve
- Box Weight: 2.59 kg (5.70 lb)
- Lid Weight: 1.18 kg (2.61 lb)
- Total Weight: 3.77 kg (8.31 lb)
- Load rating: Pedestrian and lawn care equipment
- Includes 3/8"-16 brass nut and 2 1/2" x 3/8" stainless steel bolt
- All 35.6 cm x 48.3 cm (14" x 19") covers and risers fit this box
- Made in USA

## WARRANTY

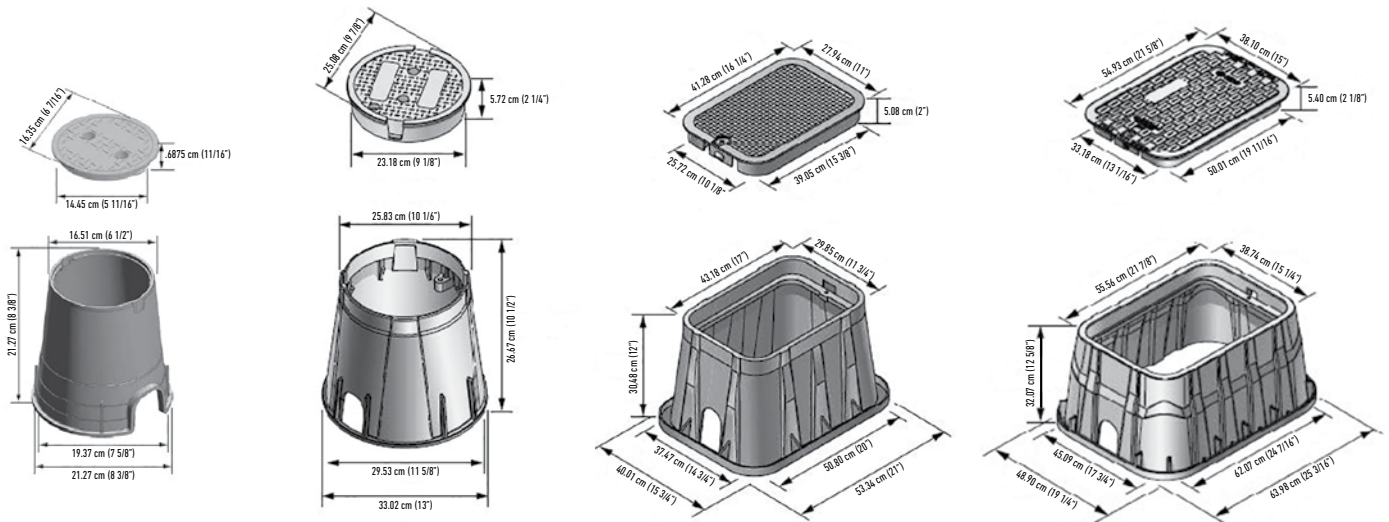
- Two years

NDS Pro-Spec® Series  
15" x 21" Corrugated Valve Box

- Material: HDPE
- Box Color: Black
- Lid Color: Green
- Lid Marking: Irrigation Control Valve
- Box Weight: 4.85 kg (10.7 lb)
- Lid Weight: 2.50 kg (5.5 lb)
- Total Weight: 7.35 kg (16.2 lb)
- Includes 3/8"-16 brass nut and stainless steel bolt
- Load rating: Pedestrian and lawn care equipment

## WARRANTY

- Two years



## NDS VALVE BOXES SPECIFYING INFORMATION

## NDS PRO-SPEC AND NDS STANDARD SERIES VALVE BOXES

NVB-XXXX		
Type	Size / Description	Body
NVB	XXXX	XXX
NVB—NDS Valve Box	6—15.2 cm (6") Round Standard Series, Black Box/Green Cover 10—25.4 cm (10") Round Pro-Spec Series, Black Box/Green Cover 1217—30.5 cm x 43.2 cm x 30.5 cm (12" x 17" x 12") Rectangular Pro-Spec Series, Black Box/Green Cover 1521—38.1 cm x 53.3 cm x 30.5 cm (15" x 21" x 12") Rectangular Pro-Spec Series, Black Box/Green Cover	RND—Round Blank—Rectangle
Example - A NVB 25.4 cm (10") round valve box would be specified as: <b>NVB-10RND</b>		