

TOROTORO
SWING JOINTS

FULL LINE OF SWING JOINTS

FEATURES

Toro swing joints cover all golf sprinkler thread types. Swing joints provide the flexibility to align the sprinkler to proper grade and level positioning to ensure optimum water use through maximum nozzle distribution uniformity.

■ Minimize Friction Loss

2,54 3,18 and 3,81cm (1", 1.25" and 1.5") models are available to cover flows exceeding 80 gpm, and minimize friction loss to ensure optimum pressure is available at each sprinkler.

■ Saddle And Glue Tee Models

Two swing joint types are available with 2" service tees included; glue tees for PVC piping applications and saddle tees for HDPE piping applications. Both tee styles are available with 2,54 3,18 and 3,81cm (1", 1.25" and 1.5") double o-ring sealing outlets.

■ Standard 2X90 And Ultra 4X90 Outlet Configurations

The standard 2x90 models provide two 90's at the outlet for alignment in two directions and the Ultra 4x90 models provide four 90's at the outlet for maximum alignment flexibility in four directions.

■ Quick Coupler Models

All swing joint styles are available with a quick coupler outlet that includes both an anti-rotation and position stabilizing feature to ensure the quick coupling valve stays secure during key installation and removal.



1", 1 1/4" and 1 1/2"



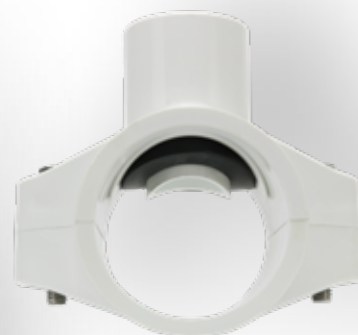
Standard 2 x 90
and Ultra 4 x 90



Quick Coupler



Glue tees, Saddle tees



DIN Saddle
Standard 63 mm Saddle

Toro Tool Tip:

Use a 1 1/4" hole saw for the 1" Saddle Tee.
Use a 1 1/2" hole saw for the 1 1/4" and 1 1/2" Saddles.

ADDITIONAL FEATURES

**1 1/4" FEMALE ACME X 1" MALE ACME ADAPTER**

Allows you to upgrade existing Rain Bird® Eagle™ 700 1 1/4" sprinklers to any Toro 800S or DT Series Sprinkler. P/N TA36-132

**DURABILITY AND RELIABILITY**

Constructed from schedule 80 PVC for durability and provides double o-ring seals on all swing fittings to ensure a lifetime of reliability and leak free performance.

SPECIFICATIONS

- Schedule 80 PVC construction
- Double o-ring swivel joints
- Low friction loss characteristics
- **Pressure Rating:** 15 psi
- **Burst Pressure Safety Rating:** 800 psi
- **Standard models** with 2 x 90 outlet configuration
- **Ultra models** with 4 x 90 outlet for maximum alignment flexibility
- **3 inlet fittings styles:** ACME, male thread and 4" spigot
- **2 outlet fitting styles:** ACME and male thread

- **Lay Lengths:** 8", 12" and 18"
- **Saddle Tee models:** 2" and 63 mm tees with 1", 1 1/4" or 1 1/2" outlet
- **Glue Tee models:** 2" tee with 1", 1 1/4" or 1 1/2" outlet
- **Glue 90° models:** 2" 90° with 1", 1 1/4" or 1 1/2" outlet
- **Quick coupler models** with Dura-lock anti-rotation feature
- Compatible with all brands of service and saddle tees

Warranty

- Five years
- Toro Golf sprinkler warranty extended to five years when purchased and installed with a Toro Swing Joint.



TORO SWING JOINTS SPECIFYING INFORMATION

TORO SWING JOINT

TSJ-ABCDEFGH-I-J-KLMN

Description	Inlet Size	Inlet Type	Size	Lay Length	Number of Elbows	Outlet Size	Outlet Type
TSJ	AB	CDE	FG	HI	J	KL	MN
TSJ—Toro Swing Joint	10—1" (2.54 cm) 12—1.25" (3.18 cm) 15—1.5" (3.8 cm) 50—0.5" (1.25 cm) 75—0.75" (1.9 cm)	A—ACME thread ST—Saddle Tee B—BSP DST—DIN Saddle M—MIPTS	Blank—same as inlet size 10—1" (2.54 cm) 12—1.25" (3.18 cm) 15—1.5" (3.8 cm)	4—4" (10.16 cm) 8—8" (20.32 cm) 12—12" (30.48 cm) 16—16" (40.64 cm) 18—18" (45.72 cm)	3—Standard Unibody 4—Standard Unibody for Saddle Tees 5—Ultra Unibody 6—Ultra Unibody for Saddle Tees	10—1" (2.54 cm) 15—1.5" (3.8 cm)	M—MIPT (Male pipe thread) A—ACME thread Q—Quick Coupler, inlet size and size are different QC—Quick Coupler inlet size and size are the same B—BSP

Example: A Toro 1.25" (3.18 cm) Swing Joint with an 1.25" (3.18 cm) ACME inlet, 12" (30.48 cm) lay length, 3 elbows (standard unibody) and 1" (2.54 cm) ACME outlet fitting would be specified as: **TSJ-12A-12-3-10A**

toro.com

©2024 The Toro Company.
All Rights Reserved.
24-328-GB

Specifications and design subject to change without notice. Products depicted in this literature are for demonstration purposes only. Actual products offered for sale may vary in use, design, required attachments and safety features. See distributor for details on all warranties.

toro.com



*Rain Bird is a registered trademark of Rain Bird Corporation.
Eagle is a trademark of Rain Bird Corporation.