

Z MASTER[®]

5000 SERIES



PRODUCTIVE FROM TOP TO BOTTOM.



HORIZON360
CONTRACTOR BUSINESS SOFTWARE

COMPATIBLE

Z MASTER[®] 5000 SERIES

72908

POWER SYSTEM

Commercial Engines at 3600 RPM*	26.5 Hp Kohler Command PRO EFI (747cc)
Starter	Electric
Heavy-Duty Canister Air Cleaner	Standard
Drive Tires	23" x 9.5" - 12" (58.4 x 24.1 - 30.5 cm)
Caster Tires	13" x 6.5" - 6" Flat-Free Semi-Pneumatic (33 x 16.5 - 15.2 cm)
Fuel/Capacity	Gas/12-Gal (45.4 L)
Hour Meter	Standard
Hydraulic Drive System	Unitized Pump & Wheel Motors
Pump	12cc/re (shock valves)
Wheel Motor	14.6 cir
Maximum Forward Speed	10 mph (16.1 km/h)
Clutch	Electromagnetic

MOWING DECKS

Deck Size	52" (132.1 cm)
Cutting Deck	7-Gauge TURBO FORCE
Bullnose Bumper	Standard
Adjustable Discharge Baffle	Standard
Rubber Discharge Chute	Standard
Spindle Housings	9" (22.9 cm) Diameter Cast Aluminum
Spindle Bearings	Maintenance-Free
Cutting Height	1.0" - 5.5" (2.5 - 14 cm)
Blades	.204" (.5 cm) Heat-Treated Steel
Blade Tip Speed	18,500+ ft/min
Belt Construction	Aramid Fiber V-Belt
Anti-Scalp Rollers	2 Side Bumpers/4 Rollers
Carrier Frame Construction	3" x 1.5" x 10-Gauge (7.6 cm x 3.8 cm x 10-Gauge)

FEATURES

Steering Controls	1-5/8" (4.1 cm) Diameter Grips; Adjustable, Dampened
Operator Seat	Deluxe Suspension with 3-D Isolation Mounts
Armrests	Standard
Seat Suspension System	Standard
Folding ROPS	Standard
Storage Compartment	Standard
Foot Pedal Deck Lift	Standard
Z Stand	Optional
Floor Pan	Pierced, Extruded Tread; No-Tools Deck Access
Flip Up Seat	Yes
Warranty	5 years or 1,200 Hours

WEIGHTS AND MEASUREMENTS

Weight	1,335 lbs.	605.5 kg
ROPS Height (Folded)	46.8"	118.9 cm
ROPS Height (Upright)	70.5"	179.1 cm
Deck Clearance Width	58"	147.3 cm
Deflector Width	68"	172.7 cm
Length	79"	200.6 cm

4.4-6.5

Maximum Acres/Hour

Based on 90% efficiency (MPH x width of cut).
Actual productivity dependent upon conditions.

When you cover a lot of ground, you need a machine that keeps up. Toro's Z Master 5000 Series packs the power, fuel efficiency and comfort you demand.



COMFORTABLE RIDE

The deluxe suspension seat features thick cushions, large bolsters and 3-D isolator mounts that absorb bumps and vibrations to reduce operator fatigue.

Z MASTER® 5000 SERIES

MyRIDE® SUSPENSION SYSTEM

72957

72910

72914

72930

POWER SYSTEM

Commercial Engines at 3600 RPM*	26.5 hp Kohler Command PRO EFI (747cc)	25.5 hp Kawasaki® FX801	25.5 Kawasaki FX850V	25 hp Kohler Command PRO EFI (747cc)
Starter	Electric			
Heavy-Duty Canister Air Cleaner	Standard			
Drive Tires	24" x 12" – 12" Turfmaster (61 x 30.5 – 30.5 cm)	▶ 24" x 12" – 12" (61 x 30.5 – 30.5 cm)		
Caster Tires	13" x 6.5" – 6" Flat-Free Semi-Pneumatic (33 x 16.5 – 15.2 cm)			
Fuel/Capacity	Gas/12-Gal (45.4 L)			
Hour Meter	Standard			
Hydraulic Drive System	Unitized Pump & Wheel Motors			
Pump	12cc/re (shock valves)			
Wheel Motor	14.6 cir			
Maximum Forward Speed	10 mph (16.1 km/h)			
Clutch	Electromagnetic			

MOWING DECKS

Deck Size	▶ 60" (152.4 cm)	▶ 60" (152.4 cm)	60" (152.4 cm)	
Cutting Deck	7-Gauge TURBO FORCE			
Bullnose Bumper	Standard			
Adjustable Discharge Baffle	Standard			
Rubber Discharge Chute	Standard			
Spindle Housings	9" (22.9 cm) Diameter Cast Aluminum			
Spindle Bearings	Maintenance-Free			
Cutting Height	1.0" – 5.5" (2.5 – 14 cm)			
Blades	.204" (.5 cm) Heat-Treated Steel			
Blade Tip Speed	18,500+ ft/min			
Belt Construction	Aramid Fiber V-Belt			
Anti-Scalp Rollers	2 Side Bumpers/4 Rollers	4 Standard, 1 Optional		
Carrier Frame Construction	3" x 1.5" x 10-Gauge (7.6 cm x 3.8 cm x 10-Gauge)			

FEATURES

Steering Controls	1-5/8" (4.1 cm) Diameter Grips; Adjustable, Dampened			
Operator Seat	▶ MyRIDE Suspension System	Deluxe Suspension with 3-D Isolation Mounts		
Armrests	Standard			
Seat Suspension System	Standard			
Folding ROPS	Standard			
Storage Compartment	Standard			
Foot Pedal Deck Lift	Standard			
Z Stand	Optional			
Floor Pan	Pierced, Extruded Tread; No-Tools Deck Access			
Flip Up Seat	Yes			
Warranty	5 years or 1,200 Hours			

WEIGHTS AND MEASUREMENTS

Weight	1,335 lbs.	605.5 kg	1,216 lbs.	551.6 kg	1,216 lbs.	551.6 kg	1,255 lbs.	569.3 cm
ROPS Height (Folded)	46.8"	118.9 cm	46.8"	118.9 cm	46.8"	118.9 cm	46.8"	118.9 cm
ROPS Height (Upright)	70.5"	179.1 cm	70.5"	179.1 cm	70.5"	179.1 cm	70.5"	179.1 cm
Deck Clearance Width	64"	162.5 cm	61.7"	156.7 cm	64"	162.5 cm	65"	165.1 cm
Deflector Width	75"	190.5 cm	75.7"	192.3 cm	75.7"	192.3 cm	75.7"	192.3 cm
Length	87.3"	221.7 cm	83.1"	211.1 cm	83.1"	211.1 cm	83.1"	211.1 cm

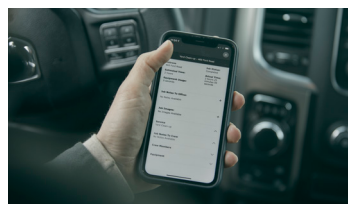
* The gross horsepower of these gasoline engines was laboratory rated at 3600 rpm by the engine manufacturer in accordance with SAE J1940 or SAE J1995. As configured to meet safety, emission and operating requirements, the actual engine horsepower on these mowers will be significantly lower. †CARB compliant model or model available.

▶ = Step Up Feature



ADJUSTABLE BAFFLES

Enhance the air flow under the mowing deck. As a result, the grass clippings are better directed into the bag, out the discharge chute, or onto the ground as mulch.



KEEP TABS WITH HORIZON360

Know your mower's GPS location and view battery status, daily runtime and estimated runtime from anywhere with Horizon360 Connect.



EFI FUEL EFFICIENCY

The environmentally friendly design exceeds requirements for CARB Tier III and EPA Phase III, and keeps emissions as low as possible by continuing to run at optimal levels.



HIGH-STRENGTH BLADES

Pick your performance. Match the blade to the job for an outstanding cut everytime.

Z MASTER® 5000 SERIES (CONTINUED)

MyRIDE®
SUSPENSION SYSTEM

72918

72953[†]
LIMITED QUANTITY

72955
LIMITED QUANTITY

72956

POWER SYSTEM

Commercial Engines at 3600 RPM*	▶ 26.5 hp Kohler Command PRO EFI (747cc)		25 hp Kohler Command PRO EFI (747cc)		26.5 hp Kohler Command PRO EFI (747cc)	
Starter	Electric					
Heavy-Duty Canister Air Cleaner	Standard					
Drive Tires	24" x 12" – 12" (61 x 30.5 – 30.5 cm)		24" x 12" – 12" Turfmaster (61 x 30.5 – 30.5 cm)		23" x 9.5" – 12" (58.4 x 24.1 – 30.5 cm)	
Caster Tires	13" x 6.5" – 6" Flat-Free Semi-Pneumatic (33 x 16.5 – 15.2 cm)					
Fuel/Capacity	Gas/12-Gal (45.4 L)					
Hour Meter	Standard					
Hydraulic Drive System	Unitized Pump & Wheel Motors					
Pump	12cc/re (shock valves)					
Wheel Motor	14.6 cir					
Maximum Forward Speed	10 mph (16.1 km/h)					
Clutch	Electromagnetic					

MOWING DECKS

Deck Size	▶ 72" (182.9 cm)		60" (152.4 cm)		52" (132.1 cm)		52" (132.1 cm)	
Cutting Deck	7-Gauge TURBO FORCE							
Bullnose Bumper	Standard							
Adjustable Discharge Baffle	Standard							
Rubber Discharge Chute	Standard							
Spindle Housings	9" (22.9 cm) Diameter Cast Aluminum							
Spindle Bearings	Maintenance-Free							
Cutting Height	1.0" – 5.5" (2.5 – 14 cm)							
Blades	204" (.5 cm) Heat-Treated Steel							
Blade Tip Speed	18,500+ ft/min							
Belt Construction	Aramid Fiber V-Belt							
Anti-Scalp Rollers	▶ 6 Standard, 1 Optional		2 Side Bumpers/4 Rollers					
Carrier Frame Construction	3" x 1.5" x 10-Gauge (7.6 cm x 3.8 cm x 10-Gauge)							

FEATURES

Steering Controls	1-5/8" (4.1 cm) Diameter Grips; Adjustable, Dampened							
Operator Seat	Deluxe Suspension with 3-D Isolation Mounts		▶ MyRIDE Suspension System					
Armrests	Standard							
Seat Suspension System	Standard							
Folding ROPS	Standard							
Storage Compartment	Standard							
Foot Pedal Deck Lift	Standard							
Z Stand	Optional							
Floor Pan	Pierced, Extruded Tread; No-Tools Deck Access							
Flip Up Seat	Yes							
Warranty	5 years or 1,200 Hours							

WEIGHTS AND MEASUREMENTS

Weight	1,296 lbs.	587.9 kg	1,335 lbs.	605.5 kg	1,259 lbs.	571 kg	1,335 lbs.	605.5 kg
ROPS Height (Folded)	46.8"	118.9 cm	46.8"	118.9 cm	46.8"	118.9 cm	46.8"	118.9 cm
ROPS Height (Upright)	70.5"	179.1 cm	70.5"	179.1 cm	70.5"	179.1 cm	70.5"	179.1 cm
Deck Clearance Width	76"	193.0 cm	64"	162.5 cm	58"	147.3 cm	58"	147.3 cm
Deflector Width	88"	223.5 cm	76"	193.0 cm	67.6"	171.7 cm	68"	172.7 cm
Length	86"	218.4 cm	83"	210.8cm	79.2"	201.2 cm	80"	203.2 cm

* The gross horsepower of these gasoline engines was laboratory rated at 3600 rpm by the engine manufacturer in accordance with SAE J1940 or SAE J1995. As configured to meet safety, emission and operating requirements, the actual engine horsepower on these mowers will be significantly lower. [†]CARB compliant model or model available.

▶ = Step Up Feature

Z MASTER[®]

5000 SERIES
REAR DISCHARGE



HORIZON360
CONTRACTOR BUSINESS SOFTWARE

COMPATIBLE

NEED A PRODUCTIVITY EDGE?

Our rear discharge models let operators trim on either side of the deck while keeping sidewalks and flowerbeds clipping-free.

SAVE TIME AND CLEANUP

With the rear discharge deck design that drops clippings within the path of the mower, gain fuel efficiency with Kohler[®] Command PRO[®] engines featuring electronic fuel injection (EFI).



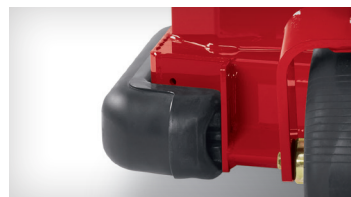
MICHELIN[®] TWEELS[®] AIRLESS RADIAL TURF TIRES

No maintenance, no compromise, no downtime. Compatible with many models - now including CASTER options!



REAR DISCHARGE

Two blades rotate clockwise and one blade rotates counter-clockwise to spread clippings evenly through the rear discharge tunnel, saving time and cleanup.



ANTI-SCALPING SYSTEM

Durable, adjustable side bumpers protect the mower while enhancing deck flotation over uneven surfaces.



RUGGED PERFORMANCE

Highly productive in taller grass and weed conditions.

	72922 [†]	72924		
POWER SYSTEM				
Commercial Engines at 3600 RPM*	26.5 hp Kohler Command PRO EFI (747cc)	26.5 Kohler Command PRO EFI (747cc)		
Starter		Electric		
Heavy-Duty Canister Air Cleaner		Standard		
Drive Tires	24" x 12" - 12" Michelin [®] Tweels (61 x 30.5 - 30.5 cm)			
Caster Tires	13" x 6.5" - 6" Flat-Free Semi-Pneumatic (33 x 16.5 - 15.2 cm)			
Fuel/Capacity	Gas/12-Gal (45.4 L)			
Hour Meter	Standard			
Hydraulic Drive System	Unitized Pumps & Wheel Motors			
Pump	12cc/rev (shock valves)			
Wheel Motor	14.6 cir			
Maximum Forward Speed	10 mph (16.1 km/h)			
Clutch	Electromagnetic			
MOWING DECKS				
Deck Size	▶ 72" (182.9 cm)	60" (152.4 cm)		
Cutting Deck	7-Gauge TURBO FORCE Rear Discharge			
Bullnose Bumper	Standard			
Deck Lift Design	Extension Spring			
Spindle Housings	9" (22.9 cm) Diameter Cast Aluminum			
1" (2.5 cm) Heavy-Duty Spindle Shaft	Standard			
Spindle Bearings	Maintenance-Free			
Cutting Height	1.0" - 5.5" (2.5 - 14 cm)			
Blades	.204" (.5 cm) Heat-Treated Steel			
Blade Tip Speed	18,500+ ft/min			
Belt Construction	Aramid Fiber V-Belt			
Anti-Scalp Rollers	2 Side Bumpers/4 Rollers			
Carrier Frame Construction	3" x 1.5" x 10-Gauge (7.6 cm x 3.8 cm x 10-Gauge)			
FEATURES				
Steering Controls	1-5/8" (4.1 cm) Diameter Grips; Adjustable, Dampened			
Operator Seat	Deluxe Suspension with 3-D Isolation Mounts			
Armrests	Standard			
Seat Suspension System	Standard			
Folding ROPS	Standard			
Storage Compartment	Standard			
Foot Pedal Deck Lift	Standard			
Z Stand	Optional			
Floor Pan	Pierced, Extruded Tread; No-Tools Deck Access			
WEIGHTS AND MEASUREMENTS				
Weight	1,335 lbs.	605.5 kg	1,335 lbs.	605.5 kg
ROPS Height (Folded)	46.8"	118.9 cm	46.8"	118.9 cm
ROPS Height (Upright)	70.5"	179.1 cm	70.5"	179.1 cm
Deck Clearance Width	78.3"	198.9 cm	66"	167.6 cm
Deflector Width	N/A	N/A	N/A	N/A
Length	87.3"	221.7 cm	87.3"	221.7 cm

* The gross horsepower of these gasoline engines was laboratory rated at 3600 rpm by the engine manufacturer in accordance with SAE J1940 or SAE J1995. As configured to meet safety, emission and operating requirements, the actual engine horsepower on these mowers will be significantly lower. †CARB compliant model.

▶ = Step Up Feature